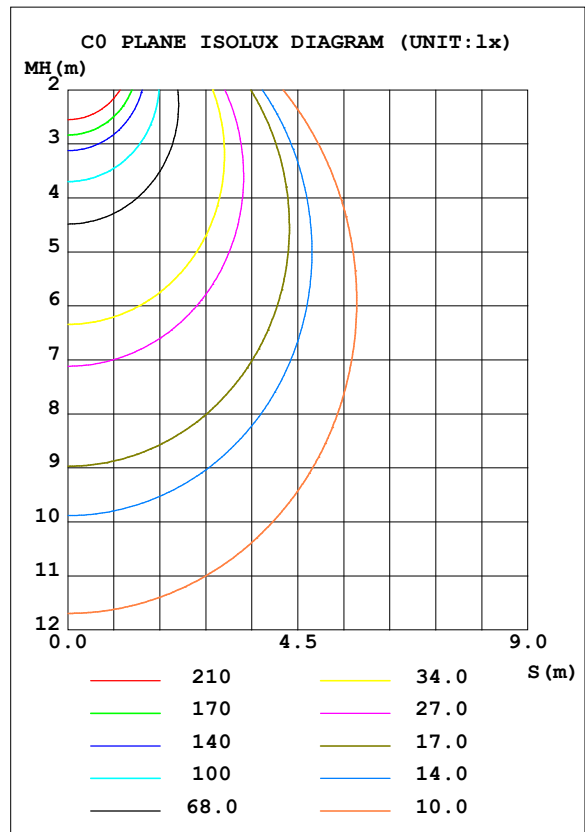
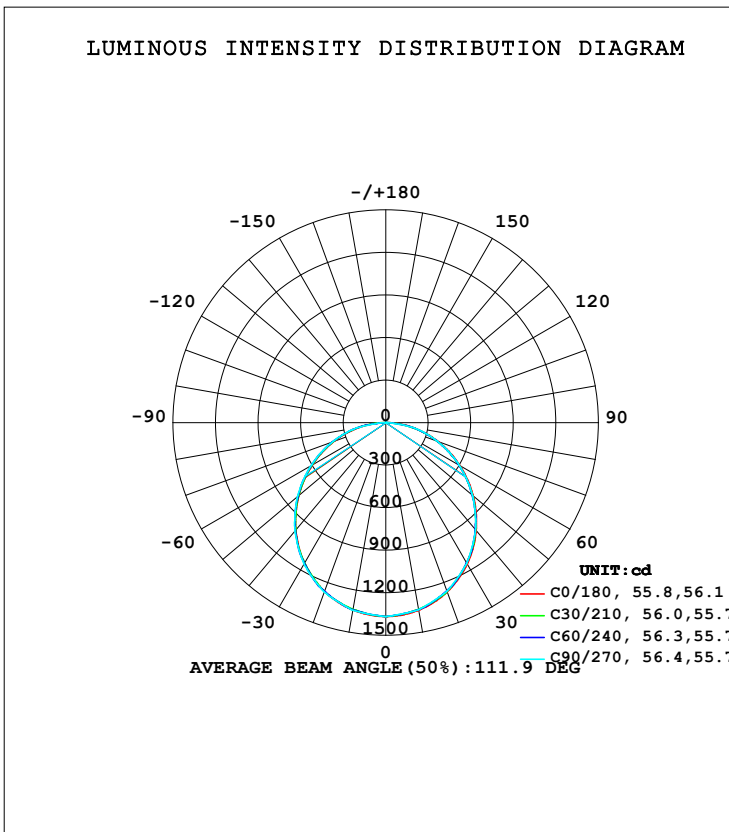


GONIOPHOTOMETERS SYSTEM TEST REPORT

LUMINAIRE PHOTOMETRIC TEST REPORT

Test:U:220.0V I:0.2430A P:51.00W PF:0.9550 Lamp Flux:3915.32x1 lm		
NAME: LED PANEL	TYPE: Recessed	WEIGHT: 1.8
SPEC.: 6060	DIM.: 595*595*9	SERIAL No.:
MFR.:	SUR.: 0.36	PROTECTION ANGLE:

DATA OF LAMP		PHOTOMETRIC DATA			
MODEL SLP	66-48W-216Q41KR80	Imax (cd)	1367	S/MH (C0/180)	1.25
NOMINAL POWER (W)	48	LOR (%)	100.0	S/MH (C90/270)	1.25
RATED VOLTAGE (V)	220	TOTAL FLUX (lm)	3915.3	η UP, DN (C0-180)	0.0, 49.6
NOMINAL FLUX (lm)	3915.32	CIE CLASS	DIRECT	η UP, DN (C180-360)	0.0, 50.4
LAMPS INSIDE	1	η up (%)	0.0	CIBSE SHR NOM	1.25
TEST VOLTAGE (V)	230	η down (%)	100.0	CIBSE SHR MAX	1.35



C Range: 0 - 360DEG
 C Interval: 5.0DEG
 Test Speed: HIGH
 Temperature: 25.3DEG
 Operators: T01
 Test Date: 2014-11-21

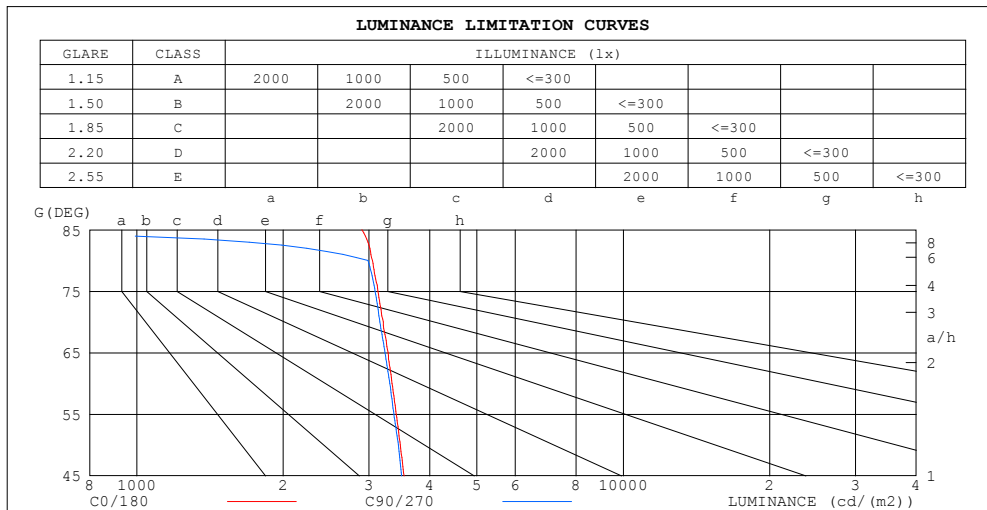
γ Range: 0 - 90DEG
 γ Interval: 0.5DEG
 Test System:
 Humidity: 65.0%
 Test Distance: 9.890m [K=1.0000]
 Remarks: 4000K

GONIOPHOTOMETERS SYSTEM TEST REPORT

ZONAL FLUX DIAGRAM AND LUMINANCE LIMITATION CURVES

ZONAL FLUX DIAGRAM:

γ	C0	C45	C90	C135	C180	C225	C270	C315	γ	Φ zone	Φ total	%lum,lamp
5	1361	1355	1353	1354	1361	1355	1355	1356	0- 5	32.52	32.52	0.83,0.83
10	1343	1336	1340	1335	1342	1337	1343	1339	5- 10	96.34	128.9	3.29,3.29
15	1312	1308	1302	1306	1310	1309	1307	1312	10- 15	156.9	285.8	7.3,7.3
20	1269	1261	1265	1259	1267	1262	1271	1266	15- 20	211.8	497.6	12.7,12.7
25	1215	1208	1204	1207	1211	1212	1213	1215	20- 25	259.5	757.1	19.3,19.3
30	1150	1143	1144	1141	1146	1147	1154	1150	25- 30	298.0	1055	26.9,26.9
35	1075	1067	1065	1065	1071	1072	1076	1076	30- 35	326.4	1381	35.3,35.3
40	992.0	986.1	985.6	984.2	987.5	991.8	998.0	997.0	35- 40	343.4	1725	44.1,44.1
45	901.7	892.5	892.1	892.4	896.6	900.4	905.6	904.4	40- 45	349.3	2074	53,53
50	805.2	798.2	798.5	800.7	800.6	808.9	813.2	811.3	45- 50	343.6	2418	61.8,61.8
55	705.1	695.9	697.4	698.1	700.6	706.8	712.2	709.9	50- 55	327.4	2745	70.1,70.1
60	602.7	594.7	596.3	597.1	597.6	606.0	611.2	609.5	55- 60	301.3	3046	77.8,77.8
65	499.7	489.3	492.6	492.9	493.2	502.8	507.1	503.7	60- 65	266.9	3313	84.6,84.6
70	395.3	385.6	389.0	389.9	388.7	399.9	403.0	399.8	65- 70	225.2	3539	90.4,90.4
75	291.6	283.2	287.9	288.1	284.5	296.5	300.4	297.0	70- 75	178.1	3717	94.9,94.9
80	190.7	180.9	186.8	188.4	179.5	195.1	197.9	193.3	75- 80	126.9	3844	98.2,98.2
85	91.00	49.98	0	53.78	64.21	56.13	0	54.76	80- 85	64.85	3908	99.8,99.8
90	2.003	0	0	0	1.120	0	0	0	85- 90	6.900	3915	100,100
95									90- 95			
100									95-100			
105									100-105			
110									105-110			
115									110-115			
120									115-120			
125									120-125			
130									125-130			
135									130-135			
140									135-140			
145									140-145			
150									145-150			
155									150-155			
160									155-160			
165									160-165			
170									165-170			
175									170-175			
180									175-180			
DEG	LUMINOUS INTENSITY:cd									UNIT:lm		



LUMINANCE cd/(m2)		
G (DEG)	C0/180	C90/270
85	2900	0
80	3050	2989
75	3129	3090
70	3211	3159
65	3285	3238
60	3348	3313
55	3415	3377
50	3480	3451
45	3542	3504

C Range: 0 - 360DEG
 C Interval: 5.0DEG
 Test Speed: HIGH
 Temperature:25.3DEG
 Operators:T01
 Test Date:2014-11-21

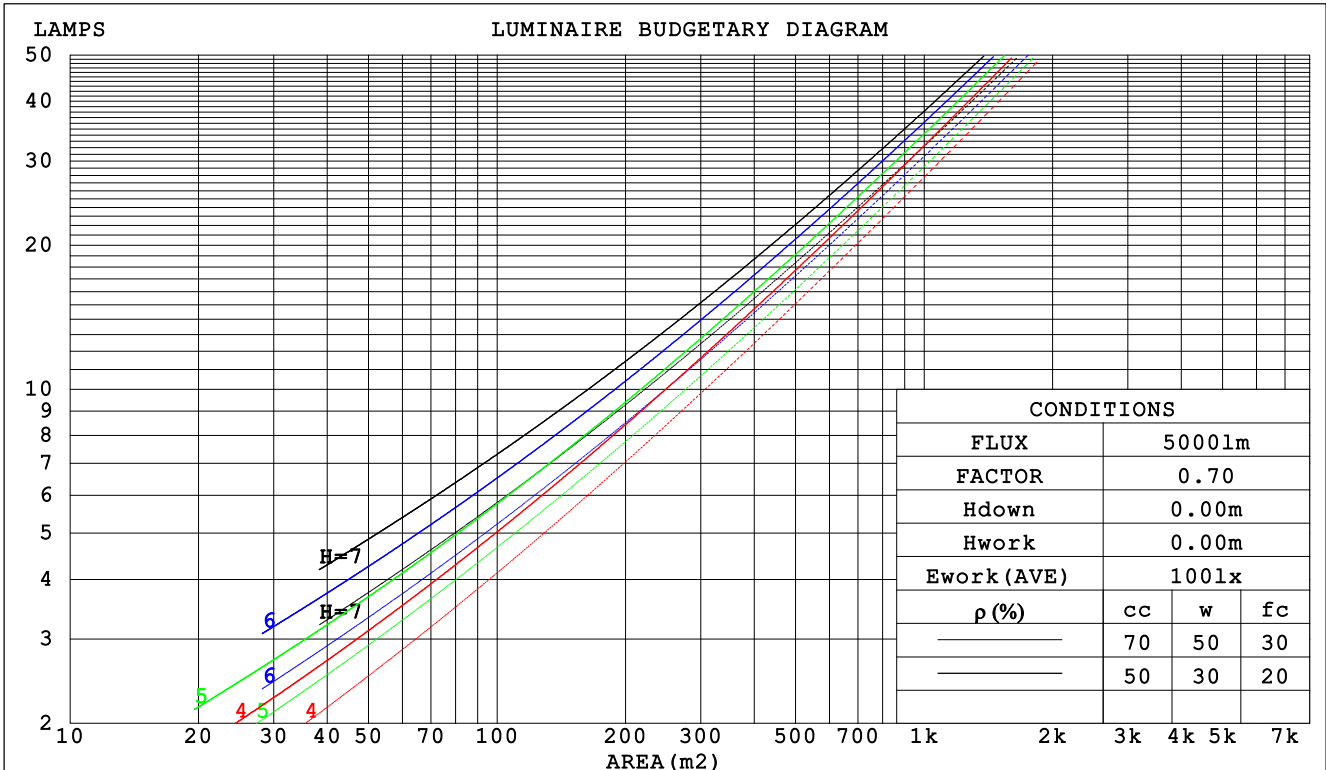
γ Range: 0 - 90DEG
 γ Interval: 0.5DEG
 Test System:
 Humidity:65.0%
 Test Distance:9.890m [K=1.0000]
 Remarks: 4000K

GONIOPHOTOMETERS SYSTEM TEST REPORT

CU AND LUMINAIRE BUDGETARY ESTIMATE DIAGRAM

Test:U:220.0V I:0.2430A P:51.00W PF:0.9550 Lamp Flux:3915.32x1 lm		
NAME: LED PANEL	TYPE: Recessed	WEIGHT: 1.8
SPEC.: 6060	DIM.: 595*595*9	SERIAL No.:
MFR.:	SUR.: 0.36	PROTECTION ANGLE:

ρ_{cc}	80%			70%			50%			30%			10%			0
ρ_w	50%	30%	10%	50%	30%	10%	50%	30%	10%	50%	30%	10%	50%	30%	10%	0
ρ_{fc}	20%			20%			20%			20%			20%			0
RCR	RCR:Room Cavity Ratio						Coefficients of Utilization(CU)									
0.0	1.19	1.19	1.19	1.16	1.16	1.16	1.11	1.11	1.11	1.06	1.06	1.06	1.02	1.02	1.02	.00
1.0	1.04	.99	.95	1.01	.97	.94	.97	.94	.91	.93	.91	.88	.90	.87	.85	.83
2.0	.90	.83	.77	.88	.82	.76	.85	.79	.75	.81	.77	.73	.78	.75	.71	.69
3.0	.79	.71	.64	.77	.70	.63	.74	.68	.62	.72	.66	.61	.69	.64	.60	.58
4.0	.70	.61	.54	.69	.60	.54	.66	.59	.53	.64	.57	.52	.61	.56	.52	.49
5.0	.62	.53	.47	.61	.53	.46	.59	.52	.46	.57	.50	.45	.55	.49	.45	.43
6.0	.56	.47	.41	.55	.47	.40	.53	.46	.40	.52	.45	.40	.50	.44	.39	.37
7.0	.51	.42	.36	.50	.42	.36	.48	.41	.35	.47	.40	.35	.46	.40	.35	.33
8.0	.46	.38	.32	.46	.37	.32	.44	.37	.32	.43	.36	.31	.42	.36	.31	.29
9.0	.43	.34	.29	.42	.34	.29	.41	.34	.28	.40	.33	.28	.39	.33	.28	.26
10.0	.39	.31	.26	.39	.31	.26	.38	.31	.26	.37	.30	.26	.36	.30	.26	.24



C Range: 0 - 360DEG
 C Interval: 5.0DEG
 Test Speed: HIGH
 Temperature: 25.3DEG
 Operators: T01
 Test Date: 2014-11-21

γ Range: 0 - 90DEG
 γ Interval: 0.5DEG
 Test System:
 Humidity: 65.0%
 Test Distance: 9.890m [K=1.0000]
 Remarks: 4000K

GONIOPHOTOMETERS SYSTEM TEST REPORT

WEC AND CCEC

Test:U:220.0V I:0.2430A P:51.00W PF:0.9550 Lamp Flux:3915.32x1 lm		
NAME: LED PANEL	TYPE:Recessed	WEIGHT:1.8
SPEC.:6060	DIM.: 595*595*9	SERIAL No.:
MFR.:	SUR.:0.36	PROTECTION ANGLE:

ρcc	80%			70%			50%			30%			10%			0
ρw	50%	30%	10%	50%	30%	10%	50%	30%	10%	50%	30%	10%	50%	30%	10%	0
ρfc	20%			20%			20%			20%			20%			0
RCR	RCR:Room Cavity Ratio						Wall Exitance Coefficients (WEC)									
0.0																
1.0	.314	.178	.057	.307	.175	.056	.293	.168	.054	.281	.162	.052	.270	.156	.050	
2.0	.295	.162	.050	.289	.159	.049	.277	.154	.048	.266	.149	.047	.256	.145	.046	
3.0	.273	.145	.043	.267	.143	.043	.257	.139	.042	.247	.135	.042	.238	.132	.041	
4.0	.251	.131	.038	.246	.129	.038	.237	.126	.038	.229	.123	.037	.221	.120	.037	
5.0	.232	.118	.034	.228	.117	.034	.219	.114	.034	.212	.112	.033	.205	.109	.033	
6.0	.215	.108	.031	.211	.107	.031	.204	.104	.030	.197	.102	.030	.191	.100	.030	
7.0	.200	.099	.028	.196	.098	.028	.190	.096	.028	.184	.094	.027	.178	.093	.027	
8.0	.186	.091	.026	.183	.090	.026	.178	.089	.025	.172	.087	.025	.167	.086	.025	
9.0	.175	.084	.024	.172	.084	.024	.167	.082	.023	.162	.081	.023	.157	.080	.023	
10.0	.164	.079	.022	.162	.078	.022	.157	.077	.022	.153	.076	.022	.148	.075	.021	

ρcc	80%			70%			50%			30%			10%			0
ρw	50%	30%	10%	50%	30%	10%	50%	30%	10%	50%	30%	10%	50%	30%	10%	0
ρfc	20%			20%			20%			20%			20%			0
RCR	RCR:Room Cavity Ratio						Ceiling Cavity Exitance Coefficients (CCEC)									
0.0	.190	.190	.190	.163	.163	.163	.111	.111	.111	.064	.064	.064	.020	.020	.020	
1.0	.181	.156	.134	.155	.134	.115	.106	.092	.080	.061	.053	.046	.019	.017	.015	
2.0	.173	.132	.098	.148	.114	.084	.101	.079	.059	.058	.046	.034	.019	.015	.011	
3.0	.165	.114	.074	.141	.099	.064	.097	.069	.045	.056	.040	.026	.018	.013	.009	
4.0	.157	.101	.058	.135	.087	.050	.093	.061	.035	.054	.036	.021	.017	.012	.007	
5.0	.150	.091	.047	.129	.078	.041	.089	.055	.029	.051	.032	.017	.017	.010	.006	
6.0	.143	.082	.039	.123	.071	.034	.085	.050	.024	.049	.029	.014	.016	.010	.005	
7.0	.136	.075	.033	.117	.065	.029	.081	.046	.020	.047	.027	.012	.015	.009	.004	
8.0	.129	.070	.029	.111	.060	.025	.077	.042	.018	.045	.025	.011	.014	.008	.003	
9.0	.123	.065	.025	.106	.056	.022	.074	.039	.016	.043	.023	.009	.014	.008	.003	
10.0	.117	.060	.022	.101	.052	.020	.070	.037	.014	.041	.022	.008	.013	.007	.003	

C Range: 0 - 360DEG
 C Interval: 5.0DEG
 Test Speed: HIGH
 Temperature:25.3DEG
 Operators:T01
 Test Date:2014-11-21

γ Range: 0 - 90DEG
 γ Interval: 0.5DEG
 Test System:
 Humidity:65.0%
 Test Distance:9.890m [K=1.0000]
 Remarks: 4000K

GONIOPHOTOMETERS SYSTEM TEST REPORT

UGR(Unified Glare Rating) Table

Test:U:220.0V I:0.2430A P:51.00W PF:0.9550 Lamp Flux:3915.32x1 lm		
NAME: LED PANEL	TYPE: Recessed	WEIGHT: 1.8
SPEC.: 6060	DIM.: 595*595*9	SERIAL No.:
MFR.:	SUR.: 0.36	PROTECTION ANGLE:

ceiling/cavity	0.7	0.7	0.5	0.5	0.3	0.7	0.7	0.5	0.5	0.3
walls	0.5	0.3	0.5	0.3	0.3	0.5	0.3	0.5	0.3	0.3
working plane	0.2	0.2	0.2	0.2	0.2	0.2	0.2	0.2	0.2	0.2
Room dimensions	Viewed crosswise					Viewed endwise				
x = 2H y = 2H	17.1	18.6	17.4	18.8	19.0	17.1	18.6	17.3	18.8	19.0
3H	18.7	20.2	19.0	20.4	20.6	18.7	20.1	19.0	20.3	20.6
4H	19.4	20.8	19.8	21.0	21.3	19.4	20.7	19.7	21.0	21.3
6H	20.0	21.2	20.3	21.5	21.8	20.0	21.2	20.3	21.5	21.8
8H	20.1	21.3	20.5	21.6	21.9	20.1	21.3	20.4	21.6	21.9
12H	20.2	21.4	20.6	21.7	22.0	20.1	21.2	20.4	21.5	21.8
4H 2H	17.7	19.1	18.0	19.3	19.6	17.7	19.1	18.0	19.3	19.6
3H	19.6	20.7	19.9	21.0	21.3	19.5	20.7	19.9	21.0	21.3
4H	20.4	21.5	20.8	21.8	22.1	20.4	21.4	20.7	21.8	22.1
6H	21.0	22.0	21.4	22.3	22.7	21.1	22.0	21.5	22.4	22.8
8H	21.2	22.1	21.6	22.5	22.9	21.2	22.1	21.6	22.5	22.9
12H	21.3	22.1	21.7	22.5	22.9	21.2	22.0	21.7	22.4	22.8
8H 4H	20.7	21.6	21.1	22.0	22.3	20.7	21.6	21.1	21.9	22.3
6H	21.5	22.2	21.9	22.6	23.1	21.6	22.3	22.0	22.7	23.1
8H	21.8	22.4	22.2	22.8	23.3	21.8	22.4	22.2	22.9	23.3
12H	21.9	22.5	22.4	22.9	23.4	21.8	22.4	22.3	22.8	23.3
12H 4H	20.7	21.5	21.1	21.9	22.3	20.7	21.5	21.1	21.9	22.3
6H	21.6	22.2	22.0	22.6	23.1	21.6	22.3	22.1	22.7	23.2
8H	21.9	22.5	22.4	22.9	23.4	21.9	22.5	22.4	22.9	23.4
Variations with the observer position at spacings:										
S = 1.0H	+ 0.1 / - 0.2					+ 0.1 / - 0.2				
1.5H	+ 0.1 / - 0.2					+ 0.1 / - 0.3				
2.0H	+ 0.2 / - 0.2					+ 0.2 / - 0.3				

CIE Pub.117 Corrected 3915 lm Total Lamp Luminous Flux. (8log(F/F0) = 4.7)

C Range: 0 - 360DEG
C Interval: 5.0DEG
Test Speed: HIGH
Temperature: 25.3DEG
Operators: T01
Test Date: 2014-11-21

γ Range: 0 - 90DEG
γ Interval: 0.5DEG
Test System:
Humidity: 65.0%
Test Distance: 9.890m [K=1.0000]
Remarks: 4000K

GONIOPHOTOMETERS SYSTEM TEST REPORT

UTILIZATION FACTORS TABLE

Test:U:220.0V I:0.2430A P:51.00W PF:0.9550 Lamp Flux:3915.32x1 lm		
NAME: LED PANEL	TYPE:Recessed	WEIGHT:1.8
SPEC.:6060	DIM.: 595*595*9	SERIAL No.:
MFR.:	SUR.:0.36	PROTECTION ANGLE:

REFLECTANCE										
Ceiling	0.8	0.8	0.8	0.7	0.7	0.7	0.5	0.5	0.5	0
Walls	0.7	0.5	0.3	0.7	0.5	0.3	0.7	0.5	0.3	0
Working plane	0.2	0.2	0.2	0.2	0.2	0.2	0.2	0.2	0.2	0
ROOM INDEX	UTILIZATION FACTORS (PERCENT) $k(RI) \times RCR = 5$									
k = 0.60	57	46	39	57	45	39	55	45	38	32
0.80	67	56	48	66	55	48	64	54	48	41
1.00	76	64	57	74	64	57	72	65	56	49
1.25	83	72	65	81	71	64	79	70	64	56
1.50	88	78	71	86	77	70	83	75	69	61
2.00	95	86	79	93	85	79	89	82	77	69
2.50	99	91	85	97	89	84	93	87	82	73
3.00	102	95	89	100	93	88	96	91	86	78
4.00	106	100	96	104	99	94	99	95	92	83
5.00	109	104	100	106	102	98	102	98	95	86
ROOM INDEX	UF(total)									Direct
According to DIN EN 13032-2 2004			Suspended				SHRNOM = 1.25			

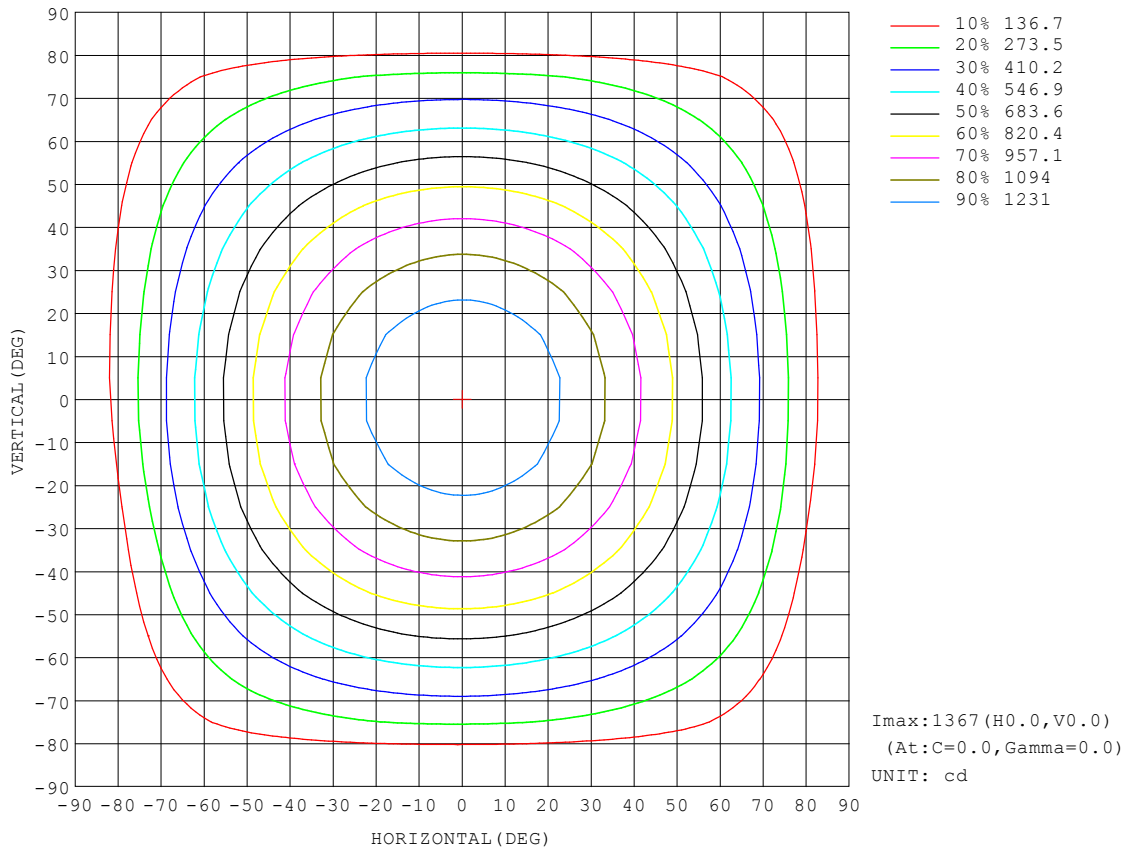
C Range: 0 - 360DEG
C Interval: 5.0DEG
Test Speed: HIGH
Temperature:25.3DEG
Operators:T01
Test Date:2014-11-21

γ Range: 0 - 90DEG
 γ Interval: 0.5DEG
Test System:E
Humidity:65.0%
Test Distance:9.890m [K=1.0000]
Remarks: 4000K

GONIOPHOTOMETERS SYSTEM TEST REPORT

ISOCANDELA DIAGRAM

Test:U:220.0V I:0.2430A P:51.00W PF:0.9550 Lamp Flux:3915.32x1 lm		
NAME: LED PANEL	TYPE: Recessed	WEIGHT: 1.8
SPEC.: 6060	DIM.: 595*595*9	SERIAL No.:
MFR.:	SUR.: 0.36	PROTECTION ANGLE:



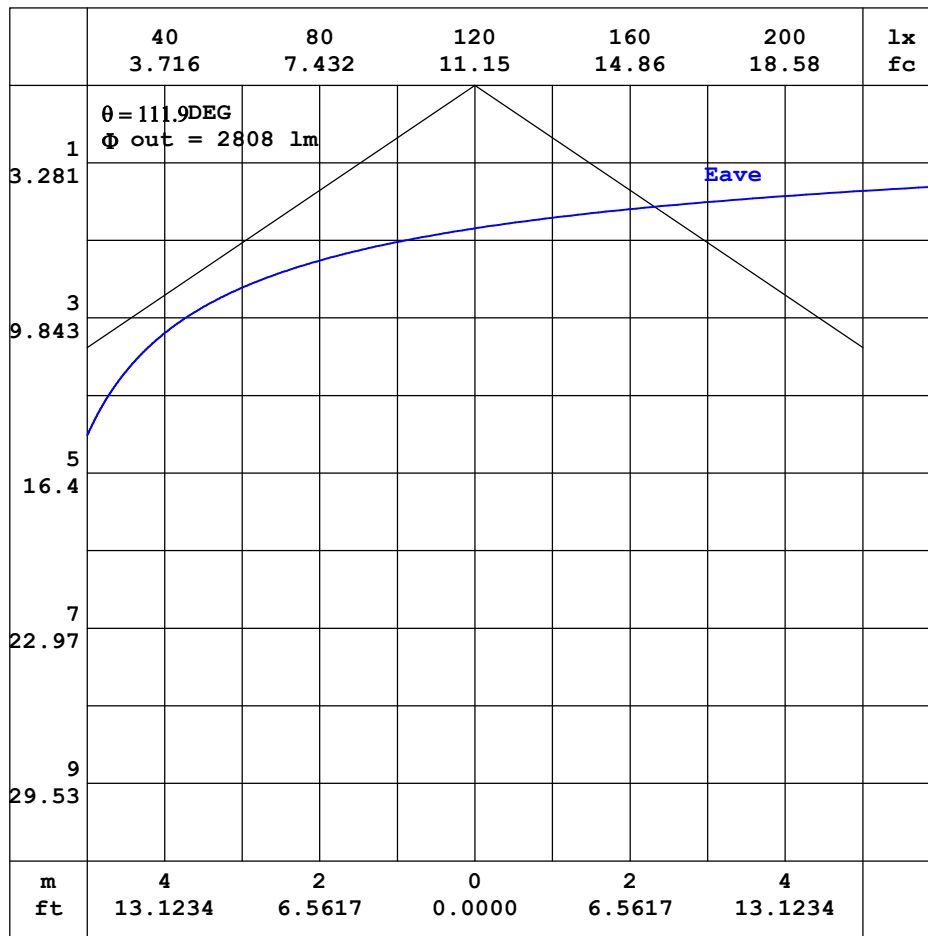
C Range: 0 - 360DEG
C Interval: 5.0DEG
Test Speed: HIGH
Temperature: 25.3DEG
Operators: T01
Test Date: 2014-11-21

γ Range: 0 - 90DEG
 γ Interval: 0.5DEG
Test System:
Humidity: 65.0%
Test Distance: 9.890m [K=1.0000]
Remarks: 4000K

GONIOPHOTOMETERS SYSTEM TEST REPORT

AAI CURVES

Test:U:220.0V I:0.2430A P:51.00W PF:0.9550 Lamp Flux:3915.32x1 lm		
NAME: LED PANEL	TYPE:Recessed	WEIGHT:1.8
SPEC.:6060	DIM.: 595*595*9	SERIAL No.:
MFR.:	SUR.:0.36	PROTECTION ANGLE:



Note: The Curves indicate the illuminated area and the average illumination when the luminaire is at different distance.

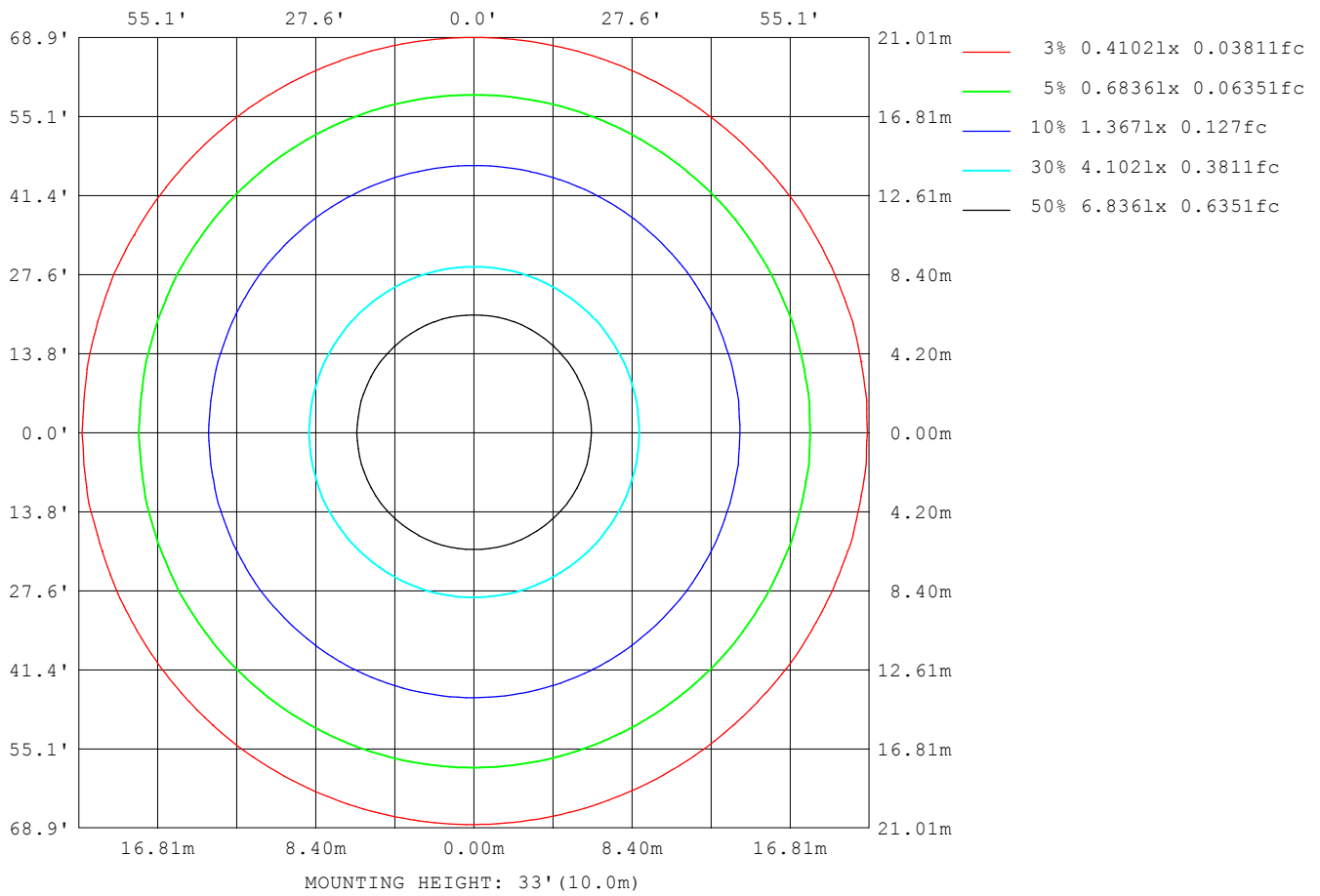
C Range: 0 - 360DEG
C Interval: 5.0DEG
Test Speed: HIGH
Temperature: 25.3DEG
Operators: T01
Test Date: 2014-11-21

γ Range: 0 - 90DEG
 γ Interval: 0.5DEG
Test System:
Humidity: 65.0%
Test Distance: 9.890m [K=1.0000]
Remarks: 4000K

GONIOPHOTOMETERS SYSTEM TEST REPORT

ISOLUX DIAGRAM

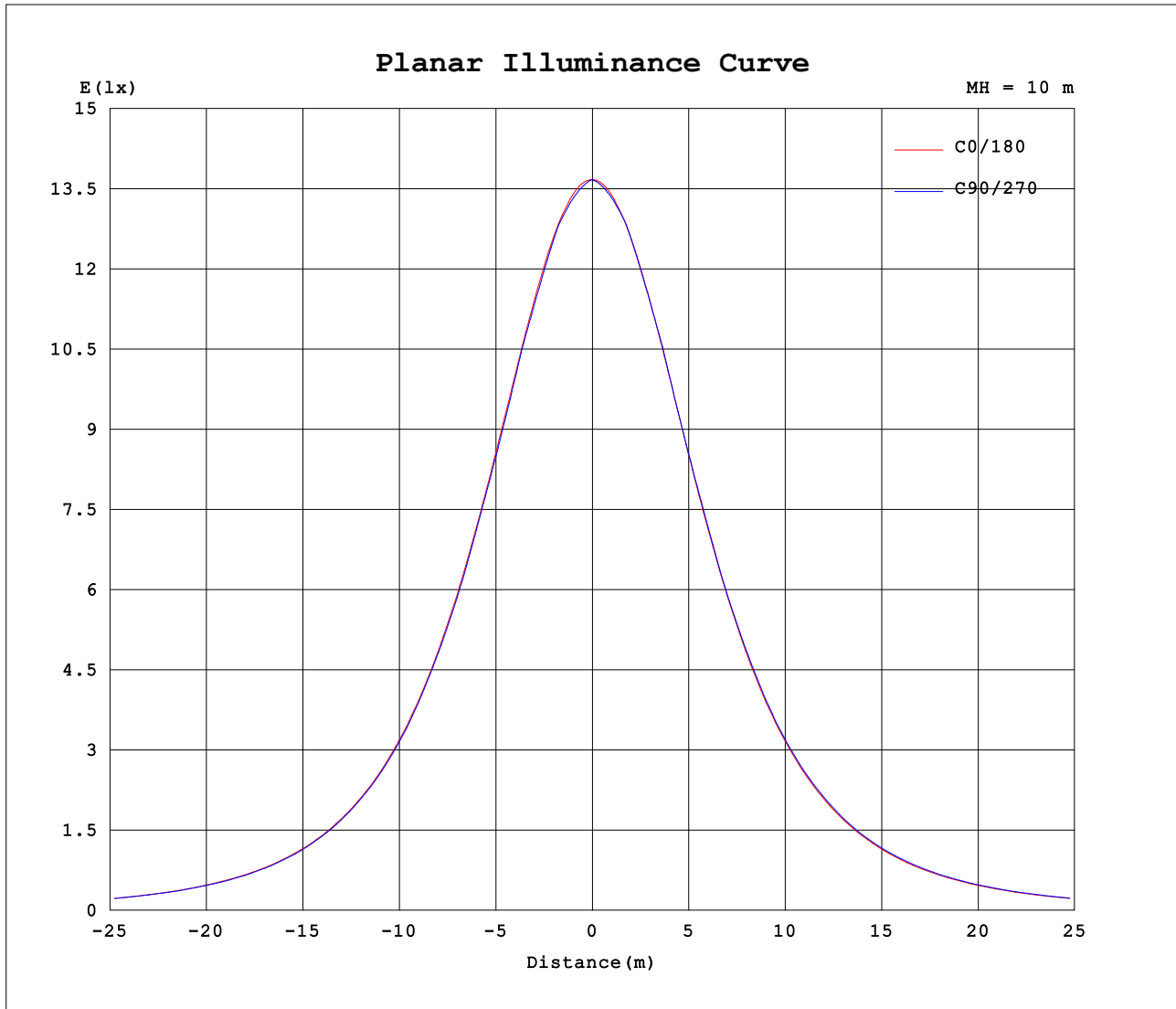
Test:U:220.0V I:0.2430A P:51.00W PF:0.9550 Lamp Flux:3915.32x1 lm		
NAME: LED PANEL	TYPE: Recessed	WEIGHT: 1.8
SPEC.: 6060	DIM.: 595*595*9	SERIAL No.:
MFR.:	SUR.: 0.36	PROTECTION ANGLE:



C Range: 0 - 360DEG
 C Interval: 5.0DEG
 Test Speed: HIGH
 Temperature: 25.3DEG
 Operators: T01
 Test Date: 2014-11-21

γ Range: 0 - 90DEG
 γ Interval: 0.5DEG
 Test System: E
 Humidity: 65.0%
 Test Distance: 9.890m [K=1.0000]
 Remarks: 4000K

Planar Illuminance Curve



C Range: 0 - 360DEG
 C Interval: 5.0DEG
 Test Speed: HIGH
 Temperature: 25.3DEG
 Operators: T01
 Test Date: 2014-11-21

γ Range: 0 - 90DEG
 γ Interval: 0.5DEG
 Test System:
 Humidity: 65.0%
 Test Distance: 9.890m [K=1.0000]
 Remarks: 4000K

GONIOPHOTOMETERS SYSTEM TEST REPORT

LUMINOUS DISTRIBUTION INTENSITY DATA

Test:U:220.0V I:0.2430A P:51.00W PF:0.9550 Lamp Flux:3915.32x1 lm		
NAME: LED PANEL	TYPE:Recessed	WEIGHT:1.8
SPEC.:6060	DIM.: 595*595*9	SERIAL No.:
MFR.:	SUR.:0.36	PROTECTION ANGLE:

Table--1

UNIT: cd

C (DEG) \ y (DEG)	0	5	10	15	20	25	30	35	40	45	50	55	60	65	70	75	80	85	90
0	1367	1367	1367	1367	1367	1367	1367	1367	1367	1367	1367	1367	1367	1367	1367	1367	1367	1367	1367
5	1361	1360	1359	1358	1357	1357	1356	1355	1355	1355	1354	1354	1354	1354	1354	1354	1354	1353	1353
10	1343	1341	1339	1338	1337	1336	1336	1336	1336	1336	1337	1337	1338	1338	1339	1339	1340	1340	1340
15	1312	1309	1307	1306	1305	1306	1307	1308	1310	1308	1307	1305	1304	1304	1303	1303	1303	1302	1302
20	1269	1266	1263	1263	1264	1266	1267	1264	1262	1261	1261	1261	1261	1262	1263	1264	1264	1265	1265
25	1215	1211	1209	1210	1212	1212	1208	1207	1207	1208	1210	1209	1207	1206	1206	1205	1205	1205	1204
30	1150	1146	1145	1147	1147	1144	1142	1143	1146	1143	1141	1141	1141	1141	1142	1143	1144	1144	1144
35	1075	1071	1071	1074	1069	1068	1071	1069	1067	1067	1068	1070	1068	1067	1066	1066	1065	1065	1065
40	992	988	989	988	986	988	985	984	985	986	984	982	982	982	983	984	985	986	986
45	902	898	902	896	897	895	894	897	894	892	893	894	894	893	892	892	892	892	892
50	805	802	803	800	800	799	801	797	797	798	797	796	796	796	797	798	798	799	799
55	705	704	702	702	699	701	697	698	697	696	696	697	697	697	697	697	697	697	697
60	603	603	599	598	599	595	595	594	594	595	594	593	593	594	594	595	595	596	596
65	500	500	496	497	492	491	491	491	490	489	489	490	490	490	491	491	492	492	493
70	395	393	391	389	387	388	386	386	386	386	386	386	387	387	387	388	388	389	389
75	292	289	285	280	282	281	281	282	282	283	284	284	284	285	286	286	287	287	288
80	191	176	162	163	168	173	176	179	180	181	182	182	183	184	185	185	186	186	187
85	91.0	57.2	57.5	60.5	67.3	72.1	75.1	68.4	59.6	50.0	40.7	31.9	24.0	17.0	11.0	6.26	2.80	0.71	0.00
90	2.00	0.00	0.00	0.00	0.00	0.00	0.00	0.00	0.00	0.00	0.00	0.00	0.00	0.00	0.00	0.00	0.00	0.00	0.00

C Range: 0 - 360DEG
C Interval: 5.0DEG
Test Speed: HIGH
Temperature:25.3DEG
Operators:T01
Test Date:2014-11-21

y Range: 0 - 90DEG
y Interval: 0.5DEG
Test System:E
Humidity:65.0%
Test Distance:9.890m [K=1.0000]
Remarks: 4000K

GONIOPHOTOMETERS SYSTEM TEST REPORT

LUMINOUS DISTRIBUTION INTENSITY DATA

Test:U:220.0V I:0.2430A P:51.00W PF:0.9550 Lamp Flux:3915.32x1 lm		
NAME: LED PANEL	TYPE: Recessed	WEIGHT: 1.8
SPEC.: 6060	DIM.: 595*595*9	SERIAL No.:
MFR.:	SUR.: 0.36	PROTECTION ANGLE:

Table--2

UNIT: cd

C (DEG) \ γ (DEG)	95	100	105	110	115	120	125	130	135	140	145	150	155	160	165	170	175	180	185
0	1367	1367	1367	1367	1367	1367	1367	1367	1367	1367	1367	1367	1367	1367	1367	1367	1367	1367	1367
5	1353	1353	1353	1353	1354	1354	1354	1354	1354	1354	1355	1355	1356	1357	1357	1358	1360	1361	1360
10	1340	1339	1339	1338	1337	1336	1336	1335	1335	1334	1334	1334	1334	1335	1336	1337	1339	1342	1340
15	1302	1302	1302	1302	1302	1303	1303	1304	1306	1307	1305	1304	1303	1303	1303	1305	1307	1310	1307
20	1264	1264	1263	1262	1261	1260	1259	1259	1259	1259	1261	1263	1262	1260	1259	1260	1263	1267	1263
25	1204	1204	1204	1205	1205	1206	1208	1209	1207	1205	1204	1205	1207	1207	1205	1205	1207	1211	1207
30	1144	1143	1142	1141	1140	1139	1139	1139	1141	1144	1142	1139	1139	1142	1141	1139	1141	1146	1142
35	1065	1065	1065	1065	1066	1067	1068	1066	1065	1065	1067	1069	1065	1064	1067	1065	1066	1071	1066
40	986	985	984	983	983	982	982	982	984	983	981	983	985	981	981	982	982	987	983
45	892	892	893	893	894	895	895	893	892	892	894	891	892	894	891	893	891	897	892
50	799	799	798	798	798	797	798	799	801	798	797	798	796	797	796	796	795	801	796
55	698	698	698	698	699	699	700	698	698	699	700	697	697	696	699	695	695	701	696
60	597	597	597	597	597	597	597	597	597	596	595	596	593	594	594	594	593	598	594
65	493	493	494	494	495	495	495	494	493	491	490	488	487	484	484	492	490	493	491
70	389	390	390	391	391	392	391	391	390	389	387	382	378	374	371	374	382	389	386
75	288	289	289	290	290	290	289	289	288	287	284	279	271	261	255	253	268	284	284
80	187	188	189	189	190	189	189	189	188	187	183	177	170	160	146	135	137	180	182
85	0.71	2.84	6.38	11.3	17.6	25.0	33.6	43.2	53.8	64.5	74.6	83.3	78.5	70.8	61.1	54.0	47.5	64.2	82.1
90	0.00	0.00	0.00	0.00	0.00	0.00	0.00	0.00	0.00	0.00	0.00	0.00	0.00	0.00	0.00	0.00	0.00	1.12	0.00

C Range: 0 - 360DEG
 C Interval: 5.0DEG
 Test Speed: HIGH
 Temperature: 25.3DEG
 Operators: T01
 Test Date: 2014-11-21

γ Range: 0 - 90DEG
 γ Interval: 0.5DEG
 Test System: E
 Humidity: 65.0%
 Test Distance: 9.890m [K=1.0000]
 Remarks: 4000K

GONIOPHOTOMETERS SYSTEM TEST REPORT

LUMINOUS DISTRIBUTION INTENSITY DATA

Test:U:220.0V I:0.2430A P:51.00W PF:0.9550 Lamp Flux:3915.32x1 lm		
NAME: LED PANEL	TYPE: Recessed	WEIGHT: 1.8
SPEC.: 6060	DIM.: 595*595*9	SERIAL No.:
MFR.:	SUR.: 0.36	PROTECTION ANGLE:

Table--3

UNIT: cd

C (DEG) \ γ (DEG)	190	195	200	205	210	215	220	225	230	235	240	245	250	255	260	265	270	275	280
0	1367	1367	1367	1367	1367	1367	1367	1367	1367	1367	1367	1367	1367	1367	1367	1367	1367	1367	1367
5	1359	1358	1357	1357	1356	1356	1355	1355	1355	1355	1355	1355	1355	1355	1355	1355	1355	1355	1355
10	1338	1337	1336	1336	1336	1336	1336	1337	1337	1338	1339	1340	1341	1342	1343	1343	1343	1343	1343
15	1305	1304	1304	1304	1306	1308	1310	1309	1308	1307	1307	1306	1307	1307	1307	1307	1307	1307	1308
20	1261	1261	1262	1264	1266	1264	1263	1262	1263	1264	1266	1267	1268	1269	1270	1271	1271	1271	1271
25	1206	1207	1210	1210	1208	1208	1209	1212	1215	1214	1213	1212	1212	1212	1212	1212	1213	1213	1213
30	1141	1143	1144	1143	1143	1147	1149	1147	1146	1146	1147	1148	1150	1151	1152	1153	1154	1154	1154
35	1066	1070	1068	1069	1073	1073	1071	1072	1073	1076	1076	1075	1075	1075	1075	1076	1076	1076	1076
40	984	984	985	990	988	988	990	992	991	991	992	993	995	996	997	998	998	998	997
45	895	894	898	897	897	901	900	900	902	905	906	905	905	905	905	905	906	906	906
50	798	799	801	801	804	803	805	809	808	808	808	809	810	811	812	813	813	813	813
55	697	702	700	703	703	707	707	707	708	710	711	711	711	712	712	712	712	712	712
60	596	597	599	600	604	603	604	606	606	607	608	609	610	611	611	611	611	611	611
65	495	494	496	498	498	500	501	503	504	506	506	506	507	507	507	507	507	507	507
70	388	390	393	394	395	398	400	400	400	401	402	402	403	403	403	403	403	403	403
75	285	288	289	292	294	295	295	296	297	298	299	300	300	300	300	300	300	300	300
80	185	187	190	191	192	193	194	195	196	197	197	198	198	198	198	198	198	198	198
85	85.9	87.1	88.2	90.1	91.8	80.0	67.9	56.1	45.2	35.1	26.2	18.4	11.9	6.71	3.00	0.75	0.00	0.75	2.98
90	0.00	0.00	0.00	0.00	0.00	0.00	0.00	0.00	0.00	0.00	0.00	0.00	0.00	0.00	0.00	0.00	0.00	0.00	0.00

C Range: 0 - 360DEG
C Interval: 5.0DEG
Test Speed: HIGH
Temperature: 25.3DEG
Operators: T01
Test Date: 2014-11-21

γ Range: 0 - 90DEG
γ Interval: 0.5DEG
Test System: E
Humidity: 65.0%
Test Distance: 9.890m [K=1.0000]
Remarks: 4000K

GONIOPHOTOMETERS SYSTEM TEST REPORT

LUMINOUS DISTRIBUTION INTENSITY DATA

Test:U:220.0V I:0.2430A P:51.00W PF:0.9550 Lamp Flux:3915.32x1 lm		
NAME: LED PANEL	TYPE: Recessed	WEIGHT: 1.8
SPEC.: 6060	DIM.: 595*595*9	SERIAL No.:
MFR.:	SUR.: 0.36	PROTECTION ANGLE:

Table--4

UNIT: cd

C (DEG) γ (DEG)	285	290	295	300	305	310	315	320	325	330	335	340	345	350	355				
0	1367	1367	1367	1367	1367	1367	1367	1367	1367	1367	1367	1367	1367	1367	1367				
5	1355	1355	1355	1356	1356	1356	1356	1356	1356	1357	1357	1358	1359	1359	1360				
10	1343	1342	1341	1341	1340	1339	1339	1338	1337	1337	1337	1338	1338	1339	1341				
15	1308	1308	1308	1309	1309	1310	1312	1313	1311	1309	1308	1307	1307	1308	1309				
20	1271	1270	1268	1267	1266	1266	1266	1267	1268	1271	1269	1266	1265	1265	1266				
25	1213	1213	1214	1215	1217	1217	1215	1213	1212	1213	1215	1215	1212	1211	1212				
30	1153	1152	1151	1150	1149	1149	1150	1153	1150	1148	1148	1151	1150	1147	1147				
35	1077	1077	1078	1079	1080	1078	1076	1075	1076	1077	1074	1074	1078	1073	1072				
40	997	996	995	994	994	995	997	995	993	993	995	991	993	993	989				
45	906	906	906	907	907	905	904	905	907	903	903	903	901	905	900				
50	813	812	811	811	810	810	811	809	809	811	808	807	806	807	804				
55	712	712	713	713	713	711	710	710	710	708	710	707	708	706	706				
60	610	610	610	609	609	609	610	608	607	607	606	608	605	603	606				
65	507	506	506	506	505	504	504	504	505	503	502	502	504	501	503				
70	403	402	402	402	401	400	400	400	399	399	400	398	397	397	396				
75	300	299	299	299	298	298	297	296	295	294	294	295	293	294	293				
80	197	197	196	196	195	194	193	193	192	192	191	190	191	192	192				
85	6.68	11.8	18.2	25.8	34.6	44.3	54.8	65.8	77.1	88.4	88.4	87.6	88.7	88.9	91.2				
90	0.00	0.00	0.00	0.00	0.00	0.00	0.00	0.00	0.00	0.00	0.00	0.00	0.00	0.00	0.00				

C Range: 0 - 360DEG
 C Interval: 5.0DEG
 Test Speed: HIGH
 Temperature: 25.3DEG
 Operators: T01
 Test Date: 2014-11-21

γ Range: 0 - 90DEG
 γ Interval: 0.5DEG
 Test System: E
 Humidity: 65.0%
 Test Distance: 9.890m [K=1.0000]
 Remarks: 4000K